



Number 158

May 2023

# Market Square Quilters

Chairperson	Sue C
Treasurer	Teresa C
Secretary	Linda B
Newsletter	Caroline W
Refreshments	Sherri Y
Web Page	Cat N
Facebook	Kirsty G
Raffle	Sherri Y
Library	Caroline W
Committee members	Tina E Sara

Enquiries to: [marketsquarequilters@gmail.com](mailto:marketsquarequilters@gmail.com)

Also check the Facebook and Instagram sites which are kept updated with interesting snippets...

You will find the email addresses of the compilers in your diary card and they will be very grateful if you send them anything but please remember to acknowledge the work of any designers whose work you may have used to avoid copyright issues.

## Next Meeting

The June 28th meeting will be a talk by popular quilter Janet Clare. She is a creative needleworker from Farnborough who has written design books and also has ranges of fabrics produced by Moda. Amongst other skills she likes 'drawing with the needle'.

The August meeting will include a Bring and Buy sale.

## Sewing Sisters

Thursday May 11th at St Mary's Hall Greenham RG19 8RZ

This is a group of MSQ member who meet on the second Thursday of each month at St. Mary's church hall in Greenham from 10am — 3pm. You are welcome to join them, bring some sewing and some lunch and have a chat with fellow quilters. Drinks and biscuits are provided.

## Workshops

### **Saturday June 3rd Chieveley Village Hall**

This was mainly concerned with quilted jackets for those who were embarking on this project.

**August 4th Festival of Quilts.** Places are still available on this coach for family, friends and people from other groups. The money can be paid by bank transfer - get in touch with Teresa if you need the bank details.

## May Meeting

It was unfortunate that Sue C was unwell so not able to go to Malvern but she was back with us for the meeting. She thanked Teresa for organising and supervising the trip.

Sign-up boards were passed around for the SOS day and for the FOQ trip.

She was pleased that MSQ had articles in both the Region 3 and Region 6 Quilters Guild magazines which helps to get our group some recognition. As well as a report on our Seminole workshop in both publications there was an article sent in by Penny giving the backstory to a quilt which she had made. If you have made an interesting quilt why not consider sending yours in too.

Two members also attended the Regional Day in area 6.

## Next Exhibition

Sue asked for thoughts on holding our next major exhibition. Traditionally it is held every three years but she suggested that we make it every five years so that enough quilts have been made to possibly fill the venue at Newbury College again. The one in 2022 was mainly so impressive because we had been able to do more sewing during lockdown and it ended up being five years since the previous one.



It takes at least two years to plan and prepare so a sub-committee would need to be arranged to make some decisions. The possibility of using a smaller venue was raised or of joining with another group to share the costs....

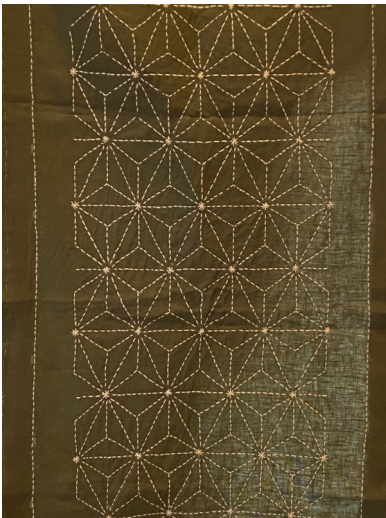
Sue asked for anybody interested in being on the sub-committee to get in touch with her.

### **Show and Tell**

Jean made a bag from a piece of fabric which had been hand printed by Alison Hulme who gave a talk to the Newbury Creative Stitchers recently.



Judith showed a large sashiko panel which she had just finished.



Pat Bu showed a quilt which she made a few years ago using a foundation pieced Liberty log cabin technique. It has been quilted by hand.



Rita had been finishing off some projects. The first, a wallhanging, she called Angels with Attitude



Also a small square quilt made from pink Click-Clack flower blocks.



and a Camden bag.



Cat showed us a quilt which she had made for her new granddaughter with sheep on it. The design is adapted from one by Janet Stone? And Cat has long-arm quilted it herself.



Jan (?) showed us another example of a log cabin quilt which she made when in Canada. It uses shaped buttons including trees to embellish it.



Also a large quilt which used fabrics from New Zealand which she had quilted at New Threads in Andover.



Caroline showed a colourful wallhanging which was begun at the Seminole workshop in March.



There were premmie quilts from Janice, Bev J, Jan and Sue C.

## Coronation Quilt



A lot of the completed blocks were handed in at the meeting. Please get in touch with me if you need to arrange to have any more collected. Then I can start putting them together—the exciting bit!

## Log Cabin

Geraldine gave us a presentation about making log cabin blocks.

This was a popular block design during the American Civil War used to show support for Abraham Lincoln and the Union Army. The central square is traditionally red to denote the fire at the heart of the home and the logs are the walls of the cabin.



The block is usually made with half dark and half light strips to make repeating blocks which can then be arranged in many ways to make patterns. It is often made by foundation piecing but does not have to be.

Courthouse steps

Pineapple block



Geraldine then gave a machine demonstration of a method of using chain piecing to make a series of blocks to save time. She found this in a book called Log Cabin Quilts Unlimited and there are indeed endless variations of designs to be made. I liked a variation in a book by Janice Gunner called Liberated Log Cabin.

The central block can be any straight edged shape—a triangle, a hexagon or even with curvy lines.



## **Forthcoming Events**

### **Farnham Maltings**

June 10th—Thread Festival

All things textile

### **Rectory Quilters**

June 16—18th New Milton Hants

### **National Needlework Archive**

May 16th—June 13th—I Am Not Invisible

Thread painting portraits by Aran Illingworth

### **The Control Tower Greenham**

July 5—23rd Beyond 4 Walls

TextileART07 exhibition

### **Romsey Quilters Exhibition**

July 1—16th Exhibition in Romsey Abbey

July 9th Fabric Fiesta—workshops, traders etc.

I was very impressed with the standard of work when I last saw this exhibition and the setting in the abbey is magnificent.

## **Fashion and Textile Museum London**

Mar 31st—Sept 10th Andy Warhol Textiles

## **Royal School of Needlework**

It is worth checking this programme of events and workshops if you enjoy other forms of needlecraft.

June 14th a Zoom talk on the textiles of Canterbury Cathedral.

## **Quilters Guild**

June 7th—Zoom talk on the Guild collection

The Loft talks

[www.facebook.com/groups/theloftquiltersguild](http://www.facebook.com/groups/theloftquiltersguild)

## **Local Suppliers**

Please check our local suppliers for any sales and workshops coming up

Andover —[www.quiltersdream.co.uk](http://www.quiltersdream.co.uk)

- [www.newthreads.com](http://www.newthreads.com)

Basingstoke —[www.purple-stitches.com](http://www.purple-stitches.com)

*Viv is just celebrating 10 years of trading!*

Wallingford - [www.villagefabrics.co.uk](http://www.villagefabrics.co.uk)

Henley - [www.ladysewandsew.com](http://www.ladysewandsew.com)

Great Shefford—[lornehillquilts@yahoo.co.uk](mailto:lornehillquilts@yahoo.co.uk)

Long arm quilting -[www.nicolerolloquilting.co.uk](http://www.nicolerolloquilting.co.uk)

## **Textile courses and workshops**

Many of the above shops also do courses. Lady Sew and Sew has just advertised some new ones.

These are some new ones I saw in the Reg 3 magazine

InStitches—Wokingham

[www.InStitchestextileCourses.co.uk](http://www.InStitchestextileCourses.co.uk)

Sewcreative—Petersfield

[www.sewcreative.org.uk](http://www.sewcreative.org.uk)

