

Number 134

October 2019

Market Square Quilters

Chairperson	Geraldine Priest
Treasurer	Barbara Lacy-Smith
Secretary	Pauline Byrne
Workshops	Geraldine priest Gail Winter Rita Maton
Newsletter	Caroline Ward
Refreshments	Pat Blatchford
Web Page	Cat Nichol
Raffle	Gail Winter Rita Maton
Library	Caroline Ward

WEB PAGE

www.marketsquarequilters.co.uk

Next meetings are:-

Wednesday 23rd October

The theme will be **Mistakes**.

This could be happy accidents or disasters which you have learnt from, all will be interesting to other members.

Please bring you **Triumphs for Show and Tell** as well.

Annual subs are due at this meeting. Preferred payment is by cheque made out to Market Square Quilters - £25 (over 80's free). Two half yearly payments are possible.

SOS Saturday 26th October

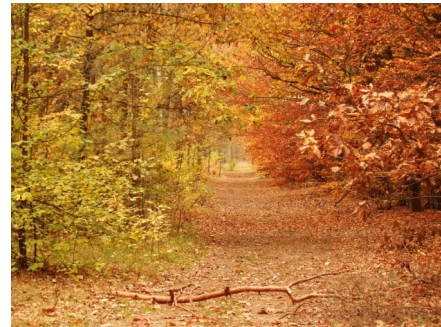
The theme will be **Free Machine Quilting** tips. To save you from learning from your mistakes come and get advice from people who have gone through the process in various ways.

St George's Hall 10am—4pm will also be available for you to spread out and do your own work. Drinks provided but bring some lunch. Cost £3.

Please come if you can—it is a good chance to chat to other people, have a few hours of concentrated sewing and be inspired by what other people are doing.

September Meeting

I hope you are all able to enjoy the beauty of Autumn before we get sucked in to Christmas preparations.



Although, the fabric for the Christmas Challenge was distributed at this meeting so we are as guilty as the shops in bringing Christmas closer. However, the Challenge is not compulsory and we just wanted to give you enough time to get your ideas on the go—anything will do so long as it uses about a third of the fabric. It is amazing how different all the results can be. If you are unable to get to the next meeting and would like to have a go then please let me know asap and I can post it to you.

AGM

Unfortunately, I was unable to attend the meeting through illness but Pauline has sent me a report—

Market Square Quilters AGM held at St Francis de Sales Hall on 25/9/2019

The Chairwoman opened the meeting and welcomed everyone. The minutes of the 2018 AGM were circulated and as there were no matters arising they were moved as accepted by Sue and seconded by Julia and the meeting continued with the annual reports.

The Chairwoman's Report:

This was a very positive one and highlighted what a successful and busy year it had been for the Club. She mentioned the Christmas and Summer parties, the annual trip to Malvern and the workshops organised by the Activities' team. She also thanked members for the wonderful premie quilts which the Club continues to make in large numbers for Basingstoke Hospital and Julia who collects and delivers them on the Club's behalf.

She concluded by thanking the committee for their support and hard work with an especial thanks to the Activities' team for their enthusiasm and hard work in organising monthly workshops. Sue was thanked for her work as Treasurer, Caroline for the production of a fantastic monthly newsletter and Cat for all the work she does in organising the Club Facebook page. Thanks also went to Pat BI for making sure that refreshments are always available, Pat Bu for taking responsibility for the Stash suitcase and Joanne Rabbitts and Sandra Kidwell who sort out the monthly raffle prizes. She finished by giving special thanks to all Club members for their support over the last three years and wishing her successor a happy term in office.

Activities's Team Report:

This was a very busy and productive year for the team and several of their workshops involved making items such as Halloween treat bags and Christmas snowflake blocks for sale at the 2020 exhibition. They also used SOS days to make a Snakes and Ladders quilt for the exhibition raffle. A further contemporary quilt was made for the raffle by an Activities's team member, Geraldine and is in the process of being professionally quilted. Alongside all of this a variety of quilting tips and ideas were explored at the Club meetings, all of which were favourably received by members.

The Treasurer's Report:

Sue reported that the Club's accounts up to the end of July were currently being reviewed and checked and if there were any changes to those being presented to the AGM members would be advised of these at the October meeting with details to follow by email. Payment for the accounts being checked will be made once the final invoice has been received.

She reported that Club finances remain healthy and in credit. Profit for the year was over £600.

Members were then asked to pass a resolution to put aside a £500 fund to be used, if needed, to replace the quilt stands. This was proposed by Sue and seconded by Jenny San after which Sue thanked Barbara and Caroline for their help throughout the year.

Following on from this report questions were raised about the increase in annual membership fees given that the Club had reserves in the bank. The Chairwoman responded to this by outlining the need to ensure that any losses incurred in hiring venues or made through lack of support, for example at SOS days, could be covered. Fees for hall rentals at St George's have been raised. It was also important to ensure that there were sufficient funds to cover the expenses involved in mounting next year's exhibition. Sue then gave more information about this. After a meeting last Tuesday

she felt more positive about being able to use Park House School as the exhibition venue but was still unsure if the original hire fee would be honoured. She is still awaiting to hear from the school's Finance Director. However the current hirers of the school for the weekend of the exhibition have agreed to let the Club use it.

Election of new officers:

Chairwoman- Geraldine Priest was proposed by Sue and this was seconded by Lesley .

Activities's Co-ordinators- the current team will continue for the foreseeable future and Jenny San volunteered to assist them.

Treasurer - Barbara was proposed by Pauline and this was seconded by Jenny San.

Secretary- Pauline agreed to continue in this role.

Election of Committee Members:

Geraldine, Pauline, Barbara, Gail and Rita were unanimously voted in as was Caroline as newsletter co-ordinator and Sue who was co-opted on.

Gail and Rita volunteered to take charge of the monthly raffle.

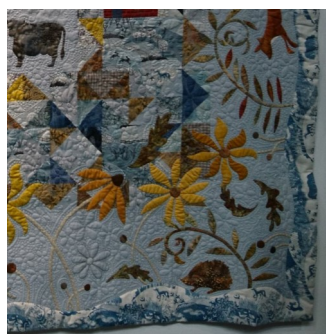
The 2020 exhibition is a year away and to ensure its success an exhibition subcommittee will be created. Sue and Sandra will front this. Cat and Teresa volunteered to help but other volunteers are still needed.

Subscriptions:

The proposed increase in annual fees was questioned by some members and the Chairwoman reiterated what had been said earlier about the need to cover the yet unknown exhibition expenses. She also emphasised that that all monies raised went back into the Club. She reminded members that losses had been incurred on SOS days and on the hire of St Mary's Greenham and The Castle School.

Following on from this it was put to the vote that the fees for the coming year be increased by £5. This was proposed by Jenny San and seconded by Julia Avery.

Thus ended the AGM.



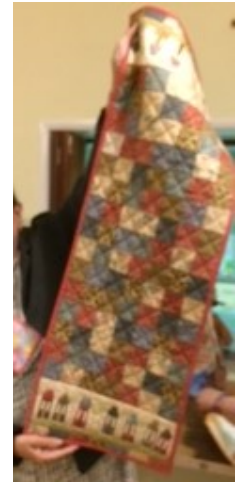
Gail Winter then led an excellent mini workshop and showed members a very different and very easy way to add a pretty border to a quilt.

Show and Tell

Sue has sent me some photos -



An amazing giraffe by Sonia Cl



A runner by Elisabeth

Julia's completed hand stitched Grandmothers Flower Garden quilt .



Such a pretty quilt by Jenny Saa



Two colourful machine quilted quilts by Cat.

A hand pieced hexagon cushion by Teresa



Two premies by Sue

Some jolly hares by Lesley



Forthcoming Events

There are various workshops at our more local quilt shops

www.quiltersdream.co.uk

www.villagefabrics.co.uk

www.newthreads.com

www.purple-stitches.com

www.ladysewandsew.com

lornehillquilts@yahoo.co.uk

- Quilters Dream** Oct 12th— Xmas tree skirt
Nov 2nd— Becky De'Ath w' shop
Little Meadow needle book
Nov 9th —fabric Xmas crackers
Nov 23rd—Xmas bunting
- Village Fabrics** Oct 18th— origami candle sur
round
Oct 24th—Xmas found. piecing
Nov 15th—rotary cutting
Nov 7th—beginners machine
applique
- New Threads** Oct 6th—English paper Piecing
Oct 20th—applecore hand piecing
Nov 30th—macramé snowflakes
- Purple Stitches** Oct 12th—beginners (4 Sats)
Nov 3rd— roman blind
- Lady Sew and Sew** Oct 18th—3D hexagons
Nov 1 –19—Paula Doyle Exhibition
Easy Stack Quilts
Nov 14—talk with Linda Seward
Nov 15—workshop with Linda

Seward

Sewical Retreats by Purple Stitches June and September in Swindon. £450

Knitting and Stitching Show at Alexandra Palace
Sat 12th Oct—coach trip from Village fabrics £35

Lorne Hill Quilting

Our own Joanne and Sandra have published a list of their workshops at East Garston—have a look . There is a beginners quilting course but they are not all quilting—they also have knitting, crochet, etc. They also have a friendly drop-in stitch and chat session on a Tuesday morning.

Xmas Wreaths - Wednesday Dec 11th

Saturday Dec 14th

10.30 - 12.30 and 1.30—3.30 Cost £20

lornehillquilts@yahoo.co.uk



Newbury Embroiderer's Guild

Saturday Nov 9th—talk by Jo Mabbett on metallic for Textiles

Old Chapel Needlework Archive

October 5—6th Craft and Gift Fair 10am—4pm

Victoria and Albert Museum

Mary Quant—most of us are old enough for it to bring back memories!

Quilters Guild Region 6

Sat October 12th **Regional Day at Benson** with talk and workshop by Gail Lawther , raffle, sales table etc.

Forthcoming MSQ Events

Activities 2019

SOS day on October 26th with a focus on free machine quilting.

SOS days are held in St. George's Hall Andover Road RG14 6NV 10—4 pm and cost £3. Bring own lunch.

Other meetings are:

1st Wednesday of month at The Castle School RG14 2JG 7 – 10pm. Also an opportunity to stitch and natter and to get to know people.

The Club library is held here so if you want to borrow any books or DVD's etc. come along to look.

2nd Thursday of each month in the Paddock Room at St Marys Church Hall, Greenham RG19 8RZ 10.00am – 3.00pm.

Fee is £3 for tea, coffee, biscuits and hall hire. W

4th Wednesday at St Francis de Sales Hall 7.15—10pm which is the main Club evening.



Joanne

FACEBOOK PAGE

I know that many of you have visited the page and hope you find it useful. Please spread the word with your quilting and sewing friends and ask them to like our page – the more members we have the more we can get our message around.

WEB PAGE www.marketsquarequilters.co.uk

Copy

I will be happy to include in the newsletter any reports of exhibitions, workshops, shops etc. which members have found interesting. Please send them to me at

caroline2226@gmail.com

LIBRARY – If you are not able to make it to The Castle School on the first Wednesday of each month 7 -10pm to borrow books you could email me with any requests and I could bring them to the monthly meetings

Club Library/Store

I am going to make up a file to show what we have stored in the library cupboard at The Castle School as so few members are able to access it on the first Monday evening of each month. I will then bring it to our main meeting and if anybody would like to borrow anything I can get it for them.

FOR SALE/WANTED/FREecycle/HELP! If you have any items to pass on or are having problems with a technique or need help to get started on a project, please email me the details and I will notify members in the newsletter.

FACEBOOK PAGE

I know that many of you have visited the page and hope you find it useful. Please spread the word with your quilting and sewing friends and ask them to like our page – the more members we have the more we can get our message around.

WEB PAGE www.marketsquarequilters.co.uk

Copy

I will be happy to include in the newsletter any reports of exhibitions, workshops, shops etc. which members have found interesting. Please send them to me at

caroline2226@gmail.com

LIBRARY – If you are not able to make it to The Castle School on the first Wednesday of each month 7 -10pm to borrow books you could email me with any requests and I could bring them to the monthly meetings

Club Library/Store

I am going to make up a file to show what we have stored in the library cupboard at The Castle School as so few members are able to access it on the first Monday evening of each month. I will then bring it to our main meeting and if anybody would like to borrow anything I can get it for them.