

Number 132

August 2019

Market Square Quilters

Chairperson	Sandra Harris
Treasurer	Sue Dobbs
Secretary	Pauline Byrne
Workshops	Rita Maton
	Gail Winter
	Geraldine Priest
Newsletter	Caroline Ward
Refreshments	Pat Blatchford
Web Page	Cat Nichol
Raffle	Joanne Rabbitts
	Sandra Kidwell
Library	Caroline Ward

WEB PAGE www.marketsquarequilters.co.uk

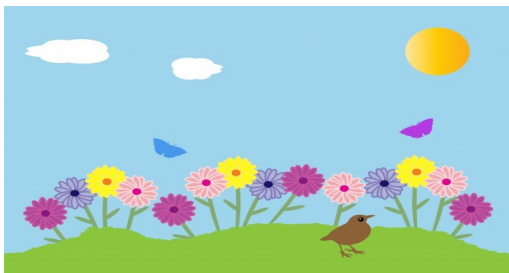
Next Meeting— Next meetings are:-

Wednesday 28th August

This will be a social event with a selection of sweet and savoury nibbles on offer—we may even go in the garden if the weather is still good.

If you are attending and you missed the sign-up sheet for food contributions then just bring something to share that you are happy to take home with you if it does not all get eaten.

We will still have a Show and Tell for which the theme is anything floral. It does not have to be anything new or even quilted, just something pretty to show to everyone.



The Castle School Wed 7th August 7—10pm

St Mary's Greenham Thurs 8th August 10 –3

July Meeting

It was a very hot evening so we were not sure how many members would come but it was a good turn-out. With the windows open it was not too stuffy in the hall.

Pauline led the meeting in Sandra's absence and noted apologies. There was one new member, Lesley, to welcome.

The first item concerned the **exhibition** next year. Sue made everybody aware of the difficulties she has been having with any commitment from Park House School. She sent a recorded letter asking for a definite decision before the end of term but this has not been received. Although it is over a year away it will soon be time to start promoting and advertising the event and booking traders and speakers. If the larger venue proves not to be available then we may have to revert to St Nicolas School as in previous years and scale down the event. We will keep you posted....

Geraldine was able to show us the Rapid City quilt top for the charity Raffle Quilt which she has now pieced. It is quite vibrant and modern so we hope it will be a popular design. Many thanks for all her hard work.



All members are being asked to make some Rug Mugs for a tombola at the show. If you need any ideas then there is a book which you can borrow but they need to be between four and five inches square. Each one will be unique so do your own thing!

Sue has bought another roll of wadding for the preemie quilts and is looking for a volunteer to store it. I had the last one but the space I used now has a tailors dummy in it so I don't have room any more.

Membership—as you are aware there is to be an increase in the cost of membership at the AGM in September to £30 pa. However Emeritus Members, those over 80 by the end of September, will not be charged. As we do not record dates of birth it will be up to those members to let Sue know if they come in to this category.

Quilt Stands—a problem which we hope we have finally found a permanent solution for! At present they are in Geraldine's house but she was somewhat taken aback by how many there were. At one time they were stored in the loft at Woolton Hill Village Hall and although there was plenty of room the access was not very easy. However, the access is being improved and for an annual rental we will be able to store them there once more. Sue is looking in to the cost of insurance and then we will be able to move them so we will be asking for volunteers to help with the move. Many thanks to Elisabeth and her husband for helping to sort out this problem.

Trip to Village Fabrics—this will be on Thursday 26th September and will include a free talk on the use of Needles and Threads or a mini workshop on Reverse Applique which will cost £3 per head. The group size will be 12/14 so please let Sue know as soon as possible if you are interested and which workshop you would prefer.

The trip will be in cars as the cost of a minibus was prohibitive so we are looking for volunteers to drive who are happy to take a couple of other members with them. A contribution towards the cost of the fuel will be asked for.

Copyright Warning— a cautionary tale from the Embroiderers Guild. A member from another group posted an 'inspirational' photograph on their web page. A firm of Lawyers in Germany used a Fishing programme which identified that this had not had the permission of the artist to be used. The fine was £6,000!

Gadgets— recommendations by members

Rita began by showing us how to use a wooden **rolling pin** as an aid to pressing pieced seams. By laying the seam along the length of the rolling pin the stitching line can be pressed without leaving a 'ghost line' on the right side of the work.

She also suggested using a chopstick or pencil to hold the work so as not to burn your fingers on the iron.

Geraldine recommended using two **door wedges** underneath the back of your machine to tilt the surface towards you a little. This causes less strain to the shoulders and back.

Sandra showed us a pair of **scissors** with a hook on the end of one of the blades. This could be used to unpick stitches when mistakes are made meaning that only one tool is needed for basic sewing jobs.



I showed some small adhesive pads to put on the end of the finger when hand quilting instead of a **thimble**. It is remarkable how many times these can be re-used.



Hazel showed us a strong **magnet** which you attached to the stitch plate of your machine in order to butt your fabric against it and stitch an accurate seam.

Jenny showed us what looked like a magnifying glass but which was in fact a **reducing glass**. When assessing the layout of blocks it is useful to highlight whether the colours work together.

She also showed a pair of **3D glasses** which came from the cinema and said that they were useful for assessing the value of colours within a layout.

Sue told us about a set of **safety pins with numbers** on them. When putting together a block you attach the pins to the pieces in the correct order of stitching. She had recently forgotten to use them and only after trimming the block realised that she had made an unfortunate mistake.

Jan showed some **pressing bars** for making bias strips. These withstand the heat of the iron.



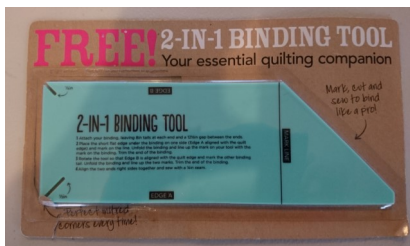
A wall hanging by Anthea made at a Gail Lawther workshop.



Two table runners by Teresa—the longer one is for when the table is extended. Good idea!



We were also shown a small ruler to help with foundation piecing—it has a quarter inch tapered edge which makes folding back and cutting the fabric easier.



Also a tool to help with joining the two ends of binding with a diagonal seam.

Thank you to everybody who passed on their words of wisdom.

Show and Tell

Gail brought in an example of non-stitch appliqué which she had mentioned last month. The lines of the design are cut in to plastiboard and the fabrics are pushed in to the cut lines and held fast by the board.



A version of a Dear Jane quilt by Jan.

The original quilt was made by Jane Sickle during the American Civil War and although it is a sampler quilt it is more intricate of other quilts of the period from this area.



This month's batch of Premmie Quilts

From June -



and from Pam and Teresa. Pam has been experimenting with her twin needle...



A pair of quilts for twins by Sue C



And two Linus premmies which were made from Aldi fat quarters.



Forthcoming Events

There are various workshops at our more local quilt shops
www.quiltersdream.co.uk
www.villagefabrics.co.uk
www.newthreads.com
www.purple-stitches.com
www.ladysewandsew.com
lornehillquilts@yahoo.co.uk

Quilters Dream Aug 19-23rd Summer School

Village Fabrics Aug 16th—machine quilting
Aug 17th—20% off SALE
Aug 24th—No Triangles workshop
Aug 31st—create a landscape

New Threads Sep 20th—Jelly Roll Rug

Purple Stitches Sep 19th—piped cushion
Sep 26th—macramé plant hanger
Nov 3rd—roman blind

Lady Sew and Sew Sep 14/15—Fat Quarter Festival
Nov 1—19—Paula Doyle Exhibition
Easy Stack Quilts
Nov 14—talk with Linda Seward
Nov 15—workshop with Linda Seward

Lorne Hill Quilting

Our own Joanne and Sandra have published a list of their workshops at East Garston—have a look . There is a beginners quilting course but they are not all quilting—they also have knitting, crochet, etc. They have a friendly drop-in stitch and chat session on a Tuesday morning.

lornehillquilts@yahoo.co.uk

Embroiderers Guild

Some of our members also belong to the Newbury branch. Go to www.newbury-embroiderers.co.uk for more details of their events this year. There is a packed programme for 2019 and they meet in the same hall at St. Francis on a Monday evening. Visitors welcome.

www.newbury-embroiderers.co.uk

NNA Greenham

Jul 16 - Aug 22—Contemporary Quilters Exhibition

- Contemporary Crochet Exhibition

Aug 27 - Oct 3—Newbury Lace Group Exhibition

Oct 4—10 - Craft and Gift Fair (closed Mon)

Oct 8—Nov 7 - Project Linus Exhibition

Open Tues, Wed, Thurs 10am—4pm plus first Saturday

West Country Textile Show

August 29th—31st UWE Bristol

A good show for those who enjoy all forms of textiles .

Forthcoming MSQ Events

Activities 2019

The theme this year will be reinforcing basic techniques and sharing members experiences of using kits, gadgets, pre-cut packs etc This will include mistakes made and lessons learnt.

SOS day on October 26th with a focus on free machine quilting.

SOS days are held in St. George's Hall Andover Road RG14 6NV 10—4 pm and cost £3. Bring own lunch.

Other meetings are:

1st Wednesday of month at The Castle School RG14 2JG 7 – 10pm. Also an opportunity to stitch and natter and to get to know people.

The Club library is held here so if you want to borrow any books or DVD's etc. come along to look.

2nd Thursday of each month in the Paddock Room at St Marys Church Hall, Greenham RG19 8RZ 10.00am – 3.00pm.

Fee is £3 for tea, coffee, biscuits and hall hire. W

4th Wednesday at St Francis de Sales Hall 7.15—10pm which is the main Club evening.

Other Events

Victoria and Albert Museum

Mary Quant from 6th April and in to next year

Royal School of Needlework

August 1st—26th Ecclesiastical Embroidery at Exeter Cathedral

West Berkshire Museum

Knitted Newbury another chance to see this knitted map showing historic buildings and places of interest in the Newbury area. It is only on until 18th August.

By the By



There was a re-enactment of The Battle of Marlborough last weekend and as part of the event some members of the English Civil War Society based themselves in The Merchants House in the high street.

The owner of the house was a silk merchant and on the four poster bed was a pieced silk coverlet made by volunteers from scraps of silk . It was inspired by the 1718 coverlet in The Quilters Guild.



The demonstrators were in period costume and they aim to be as authentic as possible to the period. They looked quite at home...

This lady, Gilly Morley specialises in stump work (although she says that there is no evidence that it was called stump work in the seventeenth century and it might be more properly called Raised Work.



She grows the plants to dye the silks threads and manages very intricate work—even in her period glasses!

FOR SALE/WANTED/FREecycle/HELP! If you have any items to pass on or are having problems with a technique or need help to get started on a project, please email me the details and I will notify members in the newsletter.

FACEBOOK PAGE

I know that many of you have visited the page and hope you find it useful. Please spread the word with your quilting and sewing friends and ask them to like our page – the more members we have the more we can get our message around.

WEB PAGE www.marketsquarequilters.co.uk

Copy

I will be happy to include in the newsletter any reports of exhibitions, workshops, shops etc. which members have found interesting. Please send them to me at

caroline2226@gmail.com

LIBRARY – If you are not able to make it to The Castle School on the first Wednesday of each month 7 -10pm to borrow books you could email me with any requests and I could bring them to the monthly meetings

