

Number 124

December 2018

Market Square Quilters

Chairperson	Sandra Harris
Treasurer	Sue Dobbs
Secretary	Pauline Byrne
Workshops	Rita Maton Gail Winter Geraldine Priest
Newsletter	Caroline Ward
Refreshments	Pat Blatchford
Web Page	Cat Nichol
Raffle	Joanne Rabbitts Sandra Kidwell
Library	Caroline Ward

WEB PAGE www.marketsquarequilters.co.uk

Next Meeting— 12th December

This will be the Christmas social so there will be no raffle and no entrance fee.

Please bring with you :-

A food contribution

A wrapped fat quarter

The Christmas Challenge 'container' (a bag, stocking, box etc. using one of the techniques which have been demonstrated through the year) if you have anything to show. This does not have to be Christmassy.

Please bring a basic sewing kit, pencil, rubber, ruler and fabric scissors to make a snowflake applique design—all will be explained on the night.

Please also bring your completed Halloween blocks.

Castle School Wed 5th Dec 7 –10pm

St Mary's Greenham Thurs 11th Dec 10 –3 pm



November Meeting

I unfortunately missed this meeting (again) but Sue has taken some photos for the newsletter and Pauline has sent a report.

The meeting was chaired by Pauline in the absence of Sandra. She welcomed everybody and introduced a new member, Janice.

Feedback about the November Club Day was very positive and Geraldine was thanked for all her hard work. Concerns were voiced about the use of disposable plastic cutlery and it was suggested that either members provide their own or that the cutlery at the hall be used and washed up. It was agreed that this would be considered next time.

Following on from a recent visit to Ardington School of Crafts, Jean B brought some copies of their 2019 programme for members to look at.

Sonia had a Wedding Ring quilt to give away and members were more than happy for Audrey to use it for fundraising for a charity in Poole.

Jenny Saa is moving house and she kindly sent in lots of fabric for members to use. Sue D had sorted it into colour themed bundles. She has also given some books and magazines which I will bring to the next Bring and Buy.



A seasonal quilt made by new member Jenny San...

Show and Tell



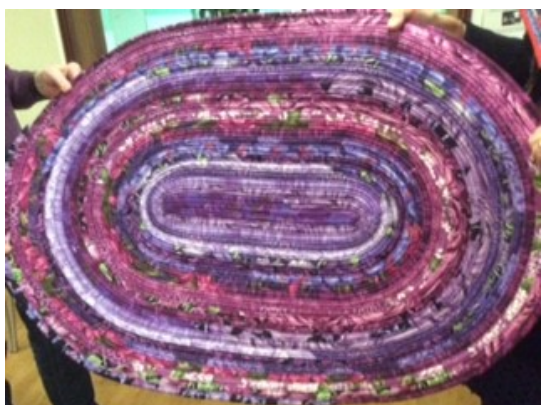
A large pretty quilt made by Hazel



An Autumnal table runner made by Linda



A modern quilt made by Cat and a rug which I know that she only bought the pattern for at the Club Day so she has been as busy as ever!



Premmie Quilts were brought in by Mo



Sue C



Geraldine and her mother



Sue D



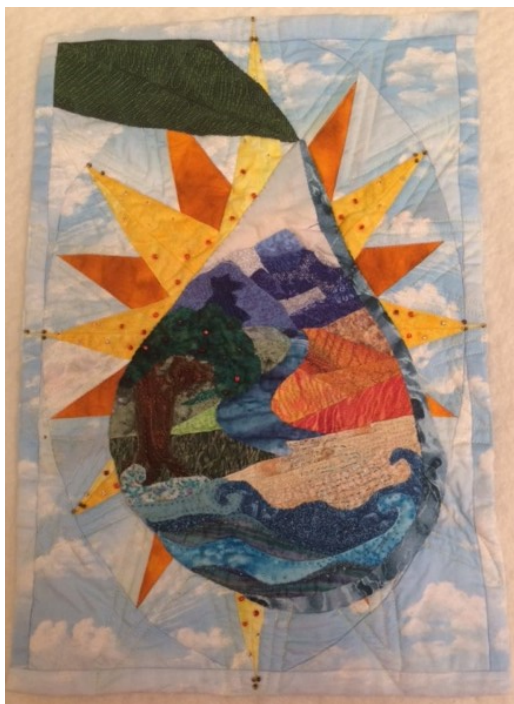
and a pair which would be suitable for twins by Jean B



Elisabeth A showed us a pair of quilts made from miniature hexagons.



And Jenny San.. a very modern raindrop quilt.



I am sorry that I missed seeing all of this work in real life so that I cannot do it justice in the descriptions of technique etc.

I hope next year will be less hectic grandchildren-wise (do I hope in vain?!)



Handles Demonstration

I also missed the handles ideas from the activities team .

They concluded their programme of ideas focused on all things BAGS with a talk on Wacky Handles.

Here are two pictures from Sue D in which I can see beads and braids being used.



January Meeting

Can you please bring your own work to do during this meeting .

There will also be a **Bring and Buy** sale for which you can put out a named pot to collect the money for your wares. It is easier if things have a price on them but you may just like members to make a donation which is fine.

I will prepare the diaries to hand out at this meeting but you may like to note that the SOS day on 19th February will be used to quilt –stitch in the ditch—the Snakes and Ladders quilt or to make preemie quilts or to do your own work....

Forthcoming Events

There are various workshops at our more local quilt shops

www.juberry.co.uk

www.quiltersdream.co.uk

www.villagefabrics.co.uk

www.newthreads.com

www.purple-stitches.com

www.ladysewandsew.com

lornehillquilts@yahoo.co.uk

Lady Sew and Sew

Jan 6th—27th SALE

Feb 27th—Rotary Cutting for the Terrified

Mar 20th—Easy Foundation Piecing

Village Fabrics

Jan 2 –5th SALE 20%off

Jan 4th—Husqvarna Accessory Demo Day

Mar 9th—Machine Trapunto class

Purple Stitches

Jan—Block of the Month starts. North Stars (Arctic animals)

New Threads

Jan 14th—Jelly Roll quilt workshop

JuBerry

Quilters Dream

Dec 18th– 22nd—Advent Social Exhibition and 40% SALE

Jan 12th—Yoko Saito Pouch workshop

lornehillquilts@yahoo.co.uk

Our own Joanne and Sandra have published a list of their workshops—have a look . These are not all quilting—they have knitting, crochet, wreath making etc. They also have a drop-in stitch and chat session on a Tuesday morning.

Dec12th—Christmas tree skirt

- Christmas wreath making

Dec 15th—Christmas wreath making

Forthcoming MSQ Events

Greenham Sewing Sisters –

We meet on the second Thursday of every month in the Paddock Room at St Marys Church Hall, Greenham 10.00am – 3.00pm. Fee is £3 and that goes towards tea, coffee, biscuits and hall hire. We hope that more of you will come along and join us in future and enjoy the company of fellow quilters and have a sew and natter.

Other meetings are:

1st Wednesday of month at The Castle School 7 – 10pm.

The Club library is held here so if you want to borrow any books or DVD's etc. come along to look.

FOR SALE/WANTED/FREecycle/HELP! If you have any items to pass on or are having problems with a technique or need help to get started on a project, please email me the details and I will notify members in the newsletter.

FACEBOOK PAGE

I know that many of you have visited the page and hope you find it useful. Please spread the word with your quilting and sewing friends and ask them to like our page – the more members we have the more we can get our message around.

WEB PAGE www.marketsquarequilters.co.uk

Copy

I will be happy to include in the newsletter any reports of exhibitions, workshops, shops etc. which members have found interesting. Please send them to me at

caroline2226@gmail.com

Quilters Guild

Being more involved in the regional QG is still being investigated....

At the moment MSQ is a member of The Quilters Guild which has no specific benefit to members apart from the very important insurance cover. We do receive a quarterly magazine which is full of interesting articles and also a regional newsletter (we are region 6) so if you would like to see these please ask at a meeting. Back copies are kept in the library.

www.quiltersguild.co.uk

LIBRARY – If you are not able to make it to The Castle School on the first Wednesday of each month 7 -10pm to borrow books you could email me with any requests and I could bring them to the monthly meeting.

Embroiderers Guild

www.newbury-embroiderers.co.uk for more details of their events this year.

Victoria and Albert Museum

Fashioned by Nature

This exhibition is on until 27th January and explores the influences of nature on fashion and what we wear from 1600 to the present day. The fashions are displayed alongside natural history specimens and examples of new developments in fabrics and dyes .

Royal School of Needlework

Animals in Embroidery

On until the end of December

