

Number 112

December 2017

Market Square Quilters

Chairperson	Sandra Harris
Treasurer	Sue Dobbs
Secretary	Pauline Byrne
Workshops	Rita Maton Gail Winter Geraldine Priest
Newsletter	Caroline Ward
Refreshments	Pat Blatchford
Web Page	Cheryl Nicol
Raffle	Joanne Rabbitts Sandra Kidwell
Library	Caroline Ward

Next Meeting— December 13th

St Francis de Sales at 7.15pm

NB CHANGE OF DATE on the diary card the party is scheduled for 20th December but as this is very close to Christmas we have managed to book the hall for Wednesday 13th December.

We will be playing the Fat Quarter Game so look out for an eye-catching fabric to wrap up and bring with you on the night.

Please bring with you:-

a food contribution

a wrapped fat quarter

your Christmas Challenge if you have one

any Christmas makes you would like to show

your brain ready to do a quiz!



November Meeting

Outing—Sandra asked for any ideas about a Club outing to be submitted otherwise we will organise the usual trip to Malvern in the Spring.

Raffle quilt— for the 2020 exhibition. Quite a few ideas have already been submitted for a Group Project but if you see any more please bring a picture to the next meeting or email a picture to me or Pauline before then along with a suggested colour scheme. Ideas will be taken until the end of December 2017 and then the committee will decide upon a shortlist of those it feels will have the best appeal to the general public at their January meeting. We will then get you all to vote on the winning design.

Invitation— North Hampshire quilters have invited us to their meeting in February to Show and Tell our work. If you are interested in going to this evening meeting please contact Sandra for the date and arrangements for getting there.

Theme—the activities team have decided upon a theme for the workshops and demonstrations next year. It will be bags, in all their different forms and will include ideas and tips for using such things as zips, D-rings, handles etc.

Circles demonstration—Geraldine began by showing us a gadget for using on the sewing machine called a **Flower Stitch Attachment**. It can be bought for £3-4 online and is



suitable for machines which have a screw on the shank to hold the foot. A converter can also be bought for other machines.

The feed dogs are lowered and a variety of basic stitches can be used to stitch circles of pattern. The size of the circles can be altered but it is really for designs with a 2-3cm diameter.

Gail then went on to her Bernina machine to show us the **Circular Embroidery Attachment**.

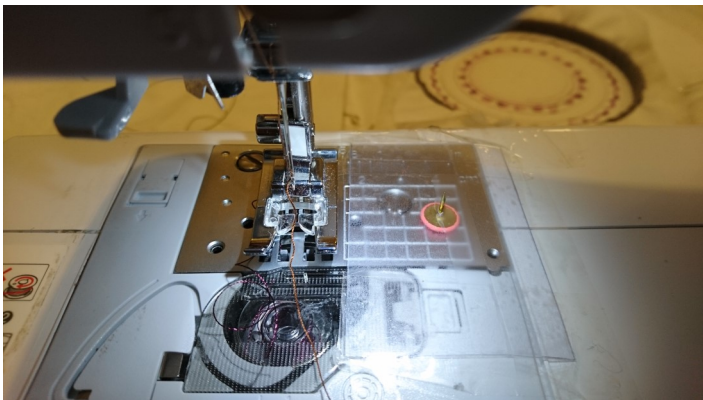
This is a bar which attaches to the foot plate. It has a slider to alter the size of the circles and a pin to hold the fabric centrally. The fabric is best held under tension in a hoop but can be kept taut just using your hands.

It can also be used for circular applique work. A straight stitch is used to anchor the fabric first then the excess is trimmed away and a decorative or satin stitch used to cover the raw edges.



Gail also showed us another way of making circles by taping a drawing pin in line with the needle onto the plate of the machine. The pin is poked through a piece of clear plastic and the edges of this are sticky taped to the machine.

When using any of these methods it is advised that the fabric is strengthened with an iron-on stabiliser first.



Friendship Quilt

Beverley is keen to begin a group project to make a Friendship Quilt within MSQ. This would require either 9 or 12 members joining in to make blocks for each other over a year. They would be using fabrics and a theme put forward by each participant who will eventually make up the quilt for themselves.

Please speak to Bev if you are interested or you do not understand!

Workshop and SOS on 18th November



The day was very well attended both by those doing the workshop and others using the opportunity to have a few hours of uninterrupted sewing away from the distractions of home.

Gail had organised the Snowy Houses quilt design and was well prepared with patterns and most importantly her Six-six machine to cut out the intricate trees. Everybody made good progress with their designs and we can look forward to seeing the completed quilts in the near future.

Show and Tell—the letter this month was S

Pat Burke brought her completed Scattered Stars quilt from a previous workshop. It was hand quilted with stars as well.





Linda showed a **Somerset Patchwork** cushion also made at a recent workshop. The fabric is folded which gives a feel almost of origami and produces a very accurate design.

Sandra brought in a spectacular Antique Wedding Ring quilt designed by Di Ford. It had been intricately custom quilted so was quite an heirloom to pass on to family. However, Sandra gave a warning because she had been surprised at how much the quilting had cost.



Sonia showed us a wallhanging of her own dandelion design which her grandchild had named 'Make a Wish'.

Sue Cuff had made a set of Christmas place mats.



Helene brought in another of her dressed rabbits...

And a premmie quilt....



Please keep the premmie quilts coming in if you can so that we can give a good donation to Basingstoke in the Spring.

Mottisfont Abbey

There is an exhibition of the work of Kaffe Fassett on at the moment at this National Trust property in Hampshire. It runs until 14th January.

Events

There are various workshops at our more local quilt shops

www.juberry.co.uk

www.quiltersdream.co.uk

www.villagefabrics.co.uk

www.newthreads.com

www.purple-stitches.com

www.ladysewandsew.com

Lady Sew & Sew now have a yarn department if you are in to knitting.

Our nearest wool specialist is **Yarnfest** at Hermitage where they do classes and social knitting Yarnfest.co.uk

Also specialist yarns at **Skein Queen** World's End.

Joanne and Sandra at Lorne Hill have published a new list of classes.

www.lornehillquilts.com

Forthcoming Events

nationalneedleworkarchive.org.uk

7th Nov—Time Travels—Kennet Miniaturists

A railway station scene from 1890—1980

Walsall Silver Thread Tapestries to **2nd December**

Lady Sew and Sew

6th December—late night shopping till 9pm

7th Jan—Winter sale begins and continues through January

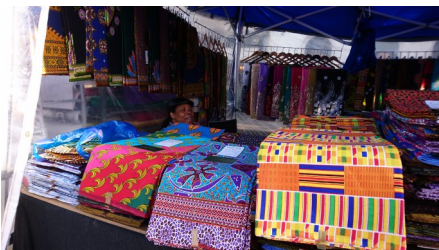
Purple Stitches

They are organising a Quilters Retreat 16th-18th March

West Berkshire Museum

5th Dec—make a Christmas Wreath

Details of next years events are on West Berkshire Heritage site. There a day classes in flower arranging, watercolours, willow, pottery etc.



There are two ladies from Ghana at the Saturday market in Newbury for the next four weeks.

They are selling mainly colourful waxed prints on 100% cotton for £10 for 6 yards.

They also have some much more expensive woven Kanthe cloth, some Chinese, Indian and Indonesian designs as well as plastic cloth and lining fabrics all at good prices.

Forthcoming MSQ Events

Greenham Sewing Sisters –

We meet on the second Thursday of every month in the Paddock Room at St Marys Church Hall, Greenham 10.00am – 3.00pm. Fee is £3 and that goes towards tea, coffee, biscuits and hall hire. We hope that more of you will come along and join us in future and enjoy the company of fellow quilters and have a sew and natter.

At the December meeting people are bringing some food to share and having a small Christmas lunch.

Other meetings are:

1st Wednesday of month at The Castle School 7 – 10pm.

N.B. no meeting in December

The Club library is held here so if you want to borrow any books or DVD's etc. come along to look.

3rd Wednesday at Pat Burkes house 10am – 3.00pm.

NB after Christmas this will be on an ad-hoc basis so we will let you know when it is on

4th Wednesday at St Francis de Sales Hall 7.15—10pm

Embroiderers Guild

The next meeting is on 11th December and is the Christmas party.

Quilt stands

Please bear in mind that we could do with a new storage space for our quilt stands at some point so let us know if you hear of anywhere.

Quilt Show dates for 2018

I had not realised that there were so many until I saw this leaflet! www.grosvenorshows.co.uk

Jan	19th-21st	Newark
Jan	26th-28th	Ardingly
Feb	16th-18th	Edinburgh
Feb	23rd-25th	Harrogate
March	2nd-4th	Duxford
April	6th-8th	Exeter
May	17th –20th	Malvern
June	1st-2nd	Spalding
June	22nd-24th	Esher
Aug	31st-2nd	Harrogate
Oct	19th-21st	Malvern
Oct	26th-28th	Duxford
Nov	9th-10th	Maidstone
Dec	7th-8th	Spalding

FACEBOOK PAGE

I know that many of you have visited the page and hope you find it useful. Please spread the word with your quilting and sewing friends and ask them to like our page – the more members we have the more we can get our message around.

WEB PAGE www.marketsquarequilters.co.uk

LIBRARY – If you are not able to make it to The Castle School on the first Wednesday of each month 7 -10pm to borrow books you could email me with any requests and I could bring them to the monthly meeting. I will bring a selection of books to each monthly meeting. A list was attached to the November newsletter.

FOR SALE/WANTED/FREecycle/HELP! If you have any items to pass on or are having problems with a technique or need help to get started on a project, please email me the details and I will notify members in the newsletter.

Copy

I will be happy to include in the newsletter any reports of exhibitions, workshops, shops etc. which members have found interesting. Please send them to me at caroline2226@gmail.com